

## **Survey Map**

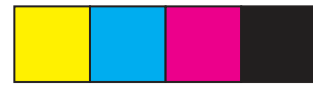
**In order to preserve the scale, the map should be printed in colour onto A3 paper.**

**When printing, select 'Actual size'.**

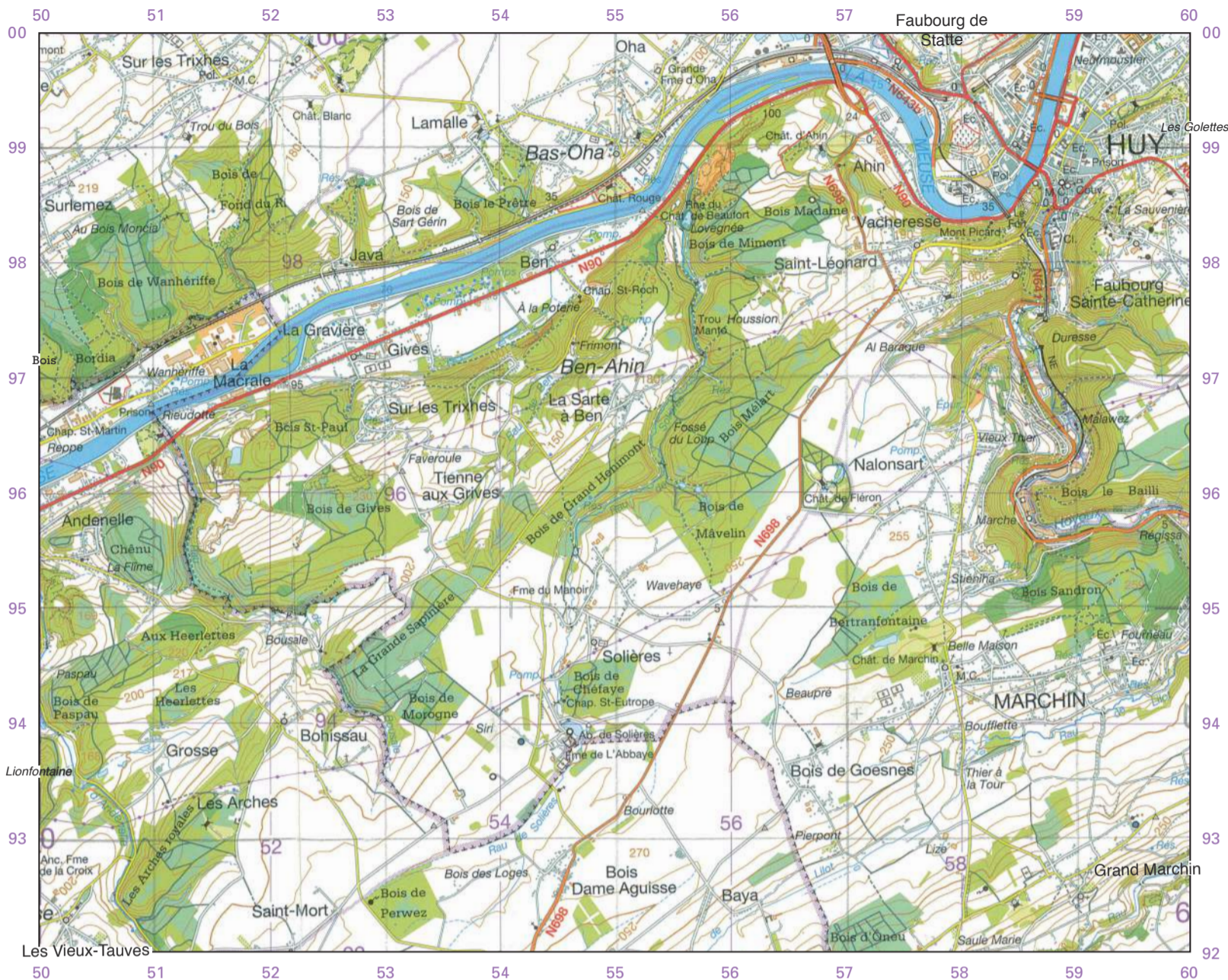
**Do not select 'Fit' as this will re-size the map.**

**You may need to change the paper size to A3.**

**Ensure the orientation is Portrait.**



Four colours should appear above; if not then please return to invigilator. Four colours should appear above; if not then please return to invigilator.



KEY

GENERAL FEATURES

- Épur. Filtration bed
Font. Fountain
Pomp. Pumping station
Rau Brook
Rés. Reservoir
Ab. Abbey
Anc. Former
Bég. Beguinage
Bne Pole
Calv. Wayside cross
Carr. Quarry
Chap. Chapel or shrine
Chât. Castle
Cl. Nursing home
Couv. Convent
Déb. Landing-stage
Éc. School
Fme Farm
Pol. Integrated police force
M.C. Town hall
Min Mill
Pp. Fire station
Sabl. Sandpit

BOUNDARIES

- Provincial boundary
District boundary
Commune boundary

COMMUNICATIONS

- Motorway
Main roads
Secondary roads
Linking roads
Other roads
Road number - Exit
Under construction
Road less than 3.5 m wide
Road with rough surface
Dirt track - Path
Railway: H.S.T. - multi-track
Railway: single track
Railway: out of use - under construction
Sidings - Station - Halt
Level crossings - Not electrified
Bridges - Tunnel
Bridge - Viaduct - Road narrowing - Tunnel

- Relief symbols: Trigonometrical point, Contour lines (Auxiliary, Index, Spot height)

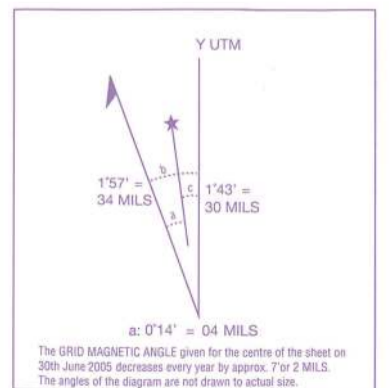
- Vegetation symbols: Slope, crest, Dike or earth bank; Deciduous trees, Conifers, Mixed woodland; Orchard, nursery, osier bed, Park, lawn; Sand, Heath or moor, Sports complex

RELIEF

- Trigonometrical point: elevated - ground level
Contour (1) - Auxiliary contour (2) - Index contour (3)
Spot height - Height rounded to the metre

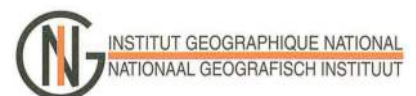
WATER FEATURES

- Watercourse wider than 50 m
Watercourse 25 m to 50 m wide
Watercourse 15 m to 25 m wide
Watercourse 3 m to 15 m wide
Brook
Intermittent watercourse
Pond
Swamp, marsh
Spring, fountain, well, reservoir
Footbridge - Lock - Culvert - Dam
Visible water pipe



Reproduced from previously printed material. Quality will not match mapping printed directly from same data. Extract taken from M737 48 HUY Edition 2.

National Geographic Institute-Brussels 2005



1 : 50 000

